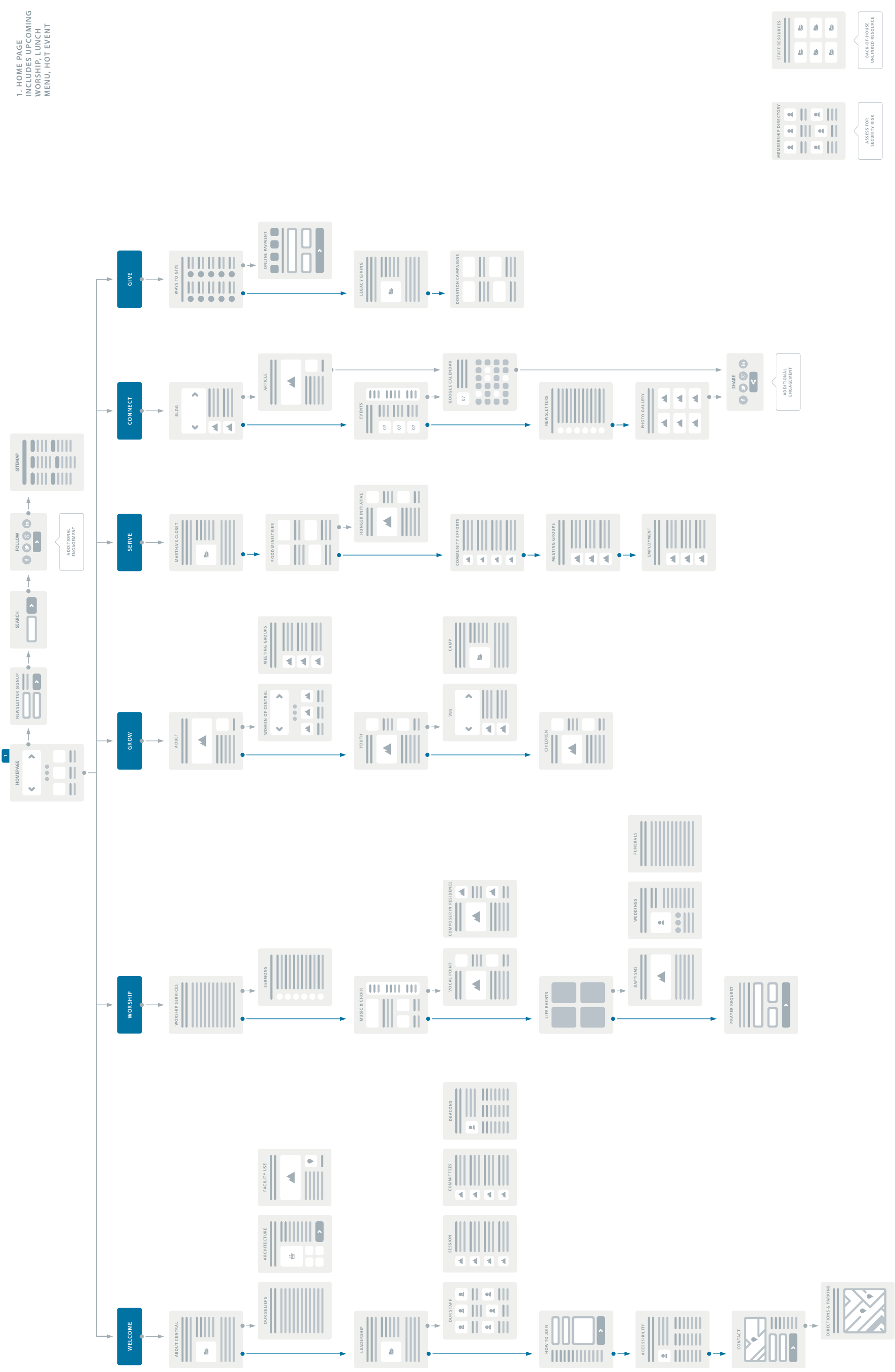


WEBSITE FLOWCHART | CONTENT SKELETON

1. HOME PAGE
INCLUDES UPCOMING
WORSHIP, LUNCH
MENU, HOT EVENT

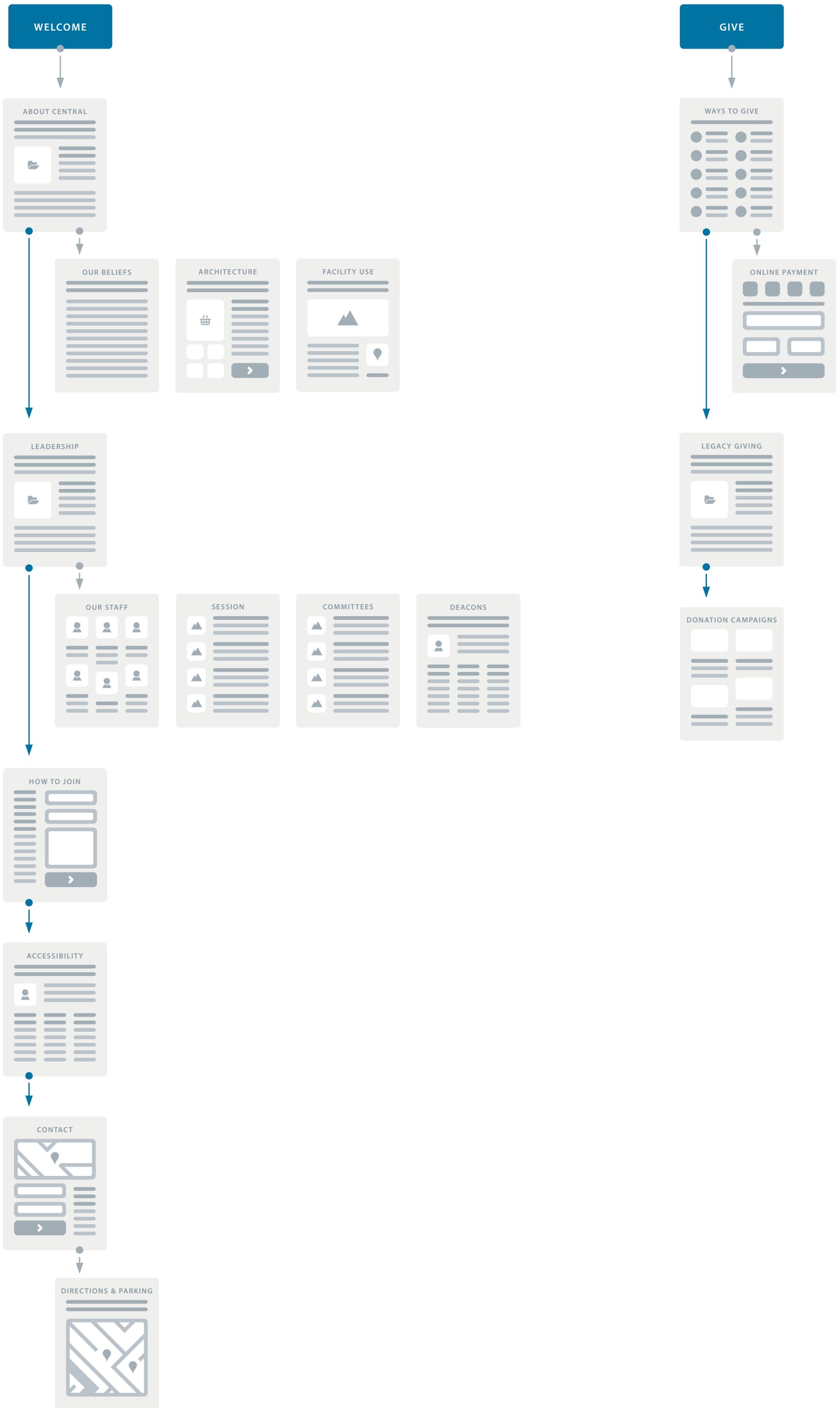


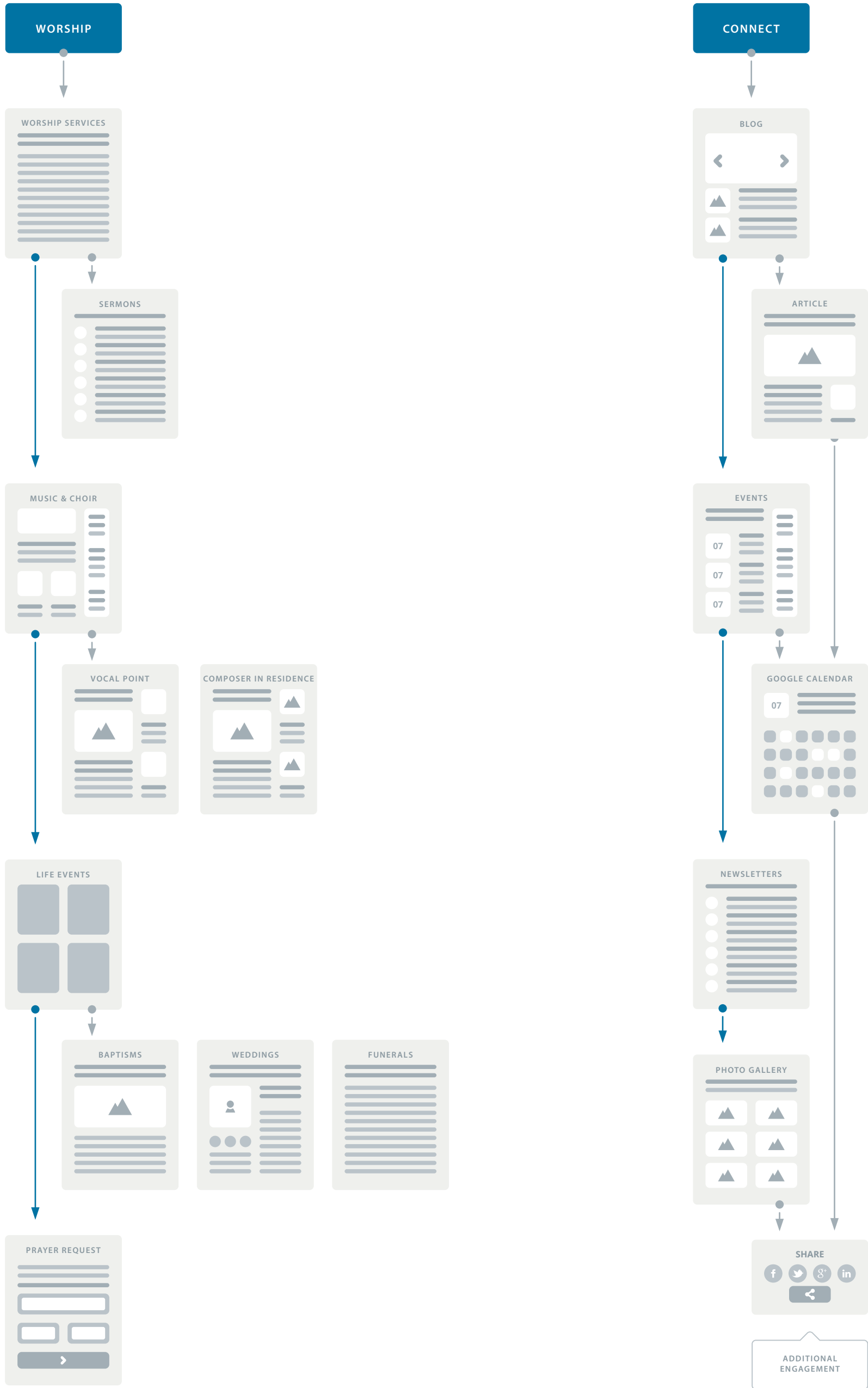
MEMBERSHIP DIRECTORY

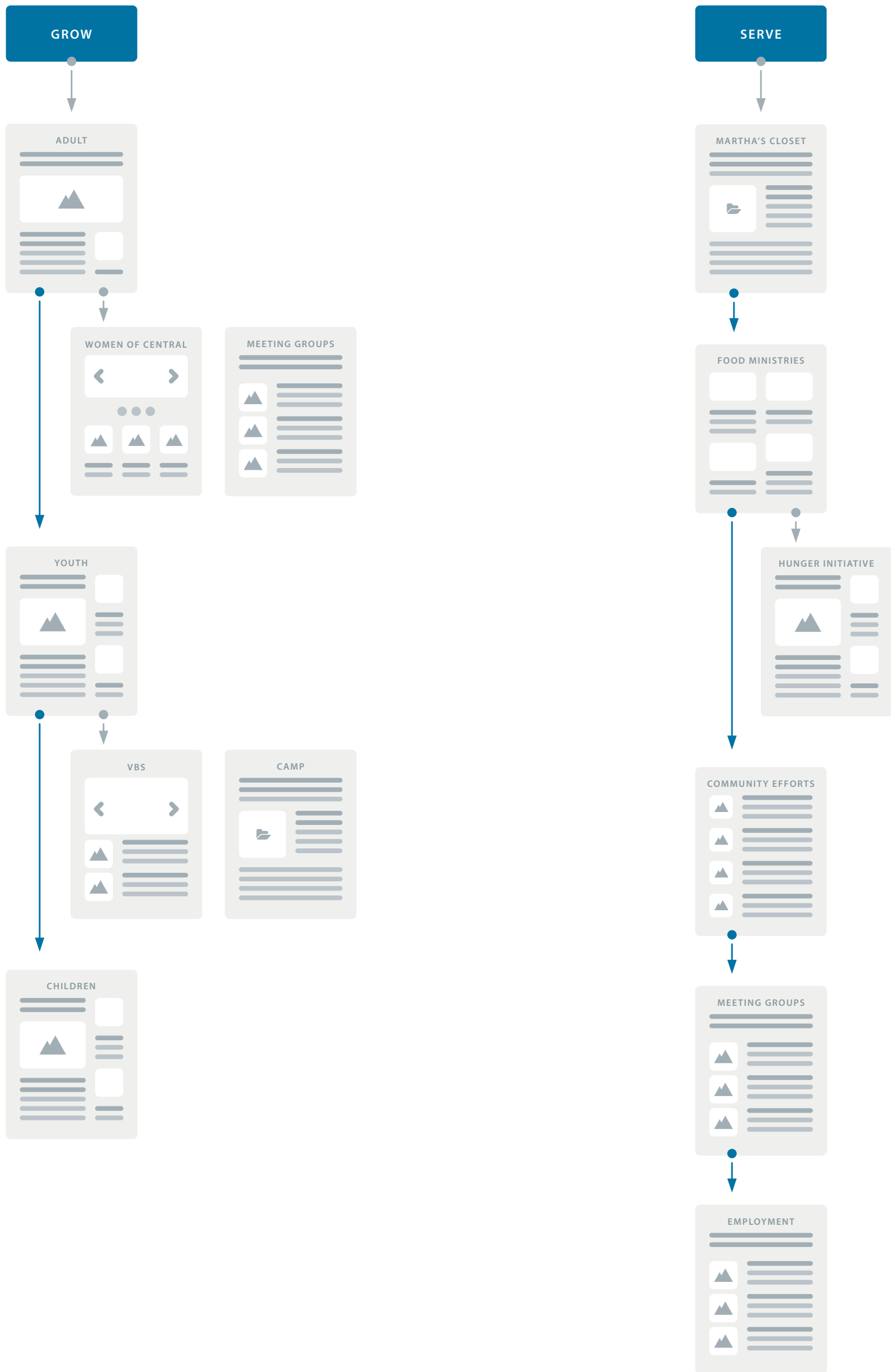
ASSESS FOR SECURITY RISK

STAFF RESOURCES

BACK-OF-HOUSE UNLINKED RESOURCE







MOBILE DESIGN INSPIRATION PROPOSED CONTENT

WELCOME | WORSHIP | GROW | SERVE | CONNECT | GIVE

WELCOME TO CENTRAL

Lorem ipsum delore hit erum aut fugia et intem et quae cus idus mi, aborrum doluptaesti beriorest, sandit, es disqui nes dedit quae estur rest doluptis delitatur, sum voluptatiam, et etus amus doloritetus autem qui simusam qui voluptatius ut escitio estibeatque porehenim fuga. Epro ipsuntem corae et que veniendi ipid quaeptatia sita nimolorum doluptaernat harcid mos explatia dem simet est ideseni vel enditas accullit, autem qui acerchilias nobis debis re volenti busciis ium dolorectus dolest dolupta tian

- Rev. David D. Colby

WORSHIP | GIVE | SERVE

SERVING OUR COMMUNITY

Lorem ipsum delore hit erum aut fugia et intem et quae cus idus mi, aborrum doluptaesti beriorest, sandit, es disqui nes dedit quae estur rest doluptis delitatur, sum voluptatiam, et etus amus doloritetus autem qui simusam qui voluptatius ut escitio estibeatque porehenim.

NEWS

Rev. David Colby | July 15, 2018
Session Pursues Hunger Initiative
tur, sum voluptatiam, et etus amus doloritetus autem qui simusam qui voluptatius ut escitio estibeatque porehen ia et intem et quae cus idus mi, aborrum doluptaesti beriorest, sandit, es disqui nes dedit quae estur rest doluptis.

Sue Hoffman | July 15, 2018
Join Us For Networking Event
tur, sum voluptatiam, et etus amus doloritetus autem qui simusam qui voluptatius ut escitio estibeatque porehen ia et intem et quae cus idus mi, aborrum doluptaesti beriorest, sandit, es disqui nes dedit quae estur rest doluptis.

Christie Rachelle | July 15, 2018
Justice Choir Sunday
tur, sum voluptatiam, et etus amus doloritetus autem qui simusam qui voluptatius ut escitio estibeatque porehen ia et intem et quae cus idus mi, aborrum doluptaesti beriorest, sandit, es disqui nes dedit quae estur rest doluptis.

THOUGHTS TO TAKE AWAY

Lorem ipsum delore hit erum aut fugia et intem et quae cus idus mi, aborrum doluptaesti beriorest, sandit, es disqui nes dedit quae estur rest doluptis delitatur, sum voluptatiam, et etus amus doloritetus autem qui simusam qui voluptatius ut escitio estibeatque porehenim fuga. Epro ipsuntem corae et que veniendi ipid quaeptatia sita nimolorum doluptaernat harcid mos explatia dem simet est ideseni vel enditas accullit, autem qui acerchilias nobis debis re volenti busciis ium

Enter email to SUBSCRIBE!

CENTRAL PRESBYTERIAN CHURCH
500 CEDAR STREET | SAINT PAUL, MN 55101 | 651.555.5555

WELCOME | WORSHIP | GROW | SERVE | CONNECT | GIVE

FAITH IN ACTION

Lorem ipsum delore hit erum aut fugia et intem et quae cus idus mi, aborrum doluptaesti beriorest, sandit, es disqui nes dedit quae estur rest doluptis delitatur, sum voluptatiam, et etus amus doloritetus autem qui simusam qui voluptatius ut escitio estibeatque porehenim fuga. Epro ipsuntem corae et que veniendi ipid quaeptatia sita nimolorum doluptaernat harcid mos explatia dem simet est ideseni vel enditas accullit, autem qui acerchilias nobis debis re volenti busciis ium dolorectus dolest dolupta tiantia volo et, adis alition res quidunt que nemperat. Natur molor remodis ere cusam con plictur sundaep ernate por mos aut qui arunt as plabo.

FOOD INITIATIVES

tur, sum voluptatiam, et etus amus doloritetus autem qui simusam qui voluptatius ut escitio estibeatque porehen

tur, sum voluptatiam, et etus amus doloritetus autem qui simusam qui voluptatius ut escitio estibeatque porehen

tur, sum voluptatiam, et etus amus doloritetus autem qui simusam qui voluptatius ut escitio estibeatque porehen

tur, sum voluptatiam, et etus amus doloritetus autem qui simusam qui voluptatius ut escitio estibeatque porehen

MARTHA'S CLOSET

- 1 Highlight specialization in senior industry - voluptatiam, et etus amus doloritetus autem qui simusam qui voluptatius ut escitio estibeatque porehen tus amus doloritetus autem qui simusam qui voluptatius ut escitio estibeatque porehen
- 2 Review established TQM and constructability of documents - vus autem qui simusam qui voluptatius ut escitio estibeatque porehen tus a qui voluptatius ut escitio estibeatque porehentus amus doloriio estibeatque porehen
- 3 Naitonal insight to best practices - vlpsumur, sum voluptatiam, et etus amus doloritetus autem qui simusam qui voluptatius ut escitio estibeatque porehen

SOCIAL JUSTICE

Lorem ipsum delore hit erum aut fugia et intem et quae cus idus mi, aborrum doluptaesti beriorest, sandit, es disqui nes dedit quae estur rest doluptis delitatur, sum voluptatiam, et etus amus doloritetus autem qui simusam qui voluptatius ut escitio estibeatque porehenim.

Non-Profit Name - Link to their website
Lorem ipsum delore hit erum aut fugia et intem et quae cus idus mi, aus idus mi, aborrum doluptaesti beriorest, sandit, es disqui nes dedit quae estur rest doluptis delitatur, sum voluptatiam, et etus amus doloritetus autem qui simusam qui voluptatius ut escitio estibeatque porehenim.

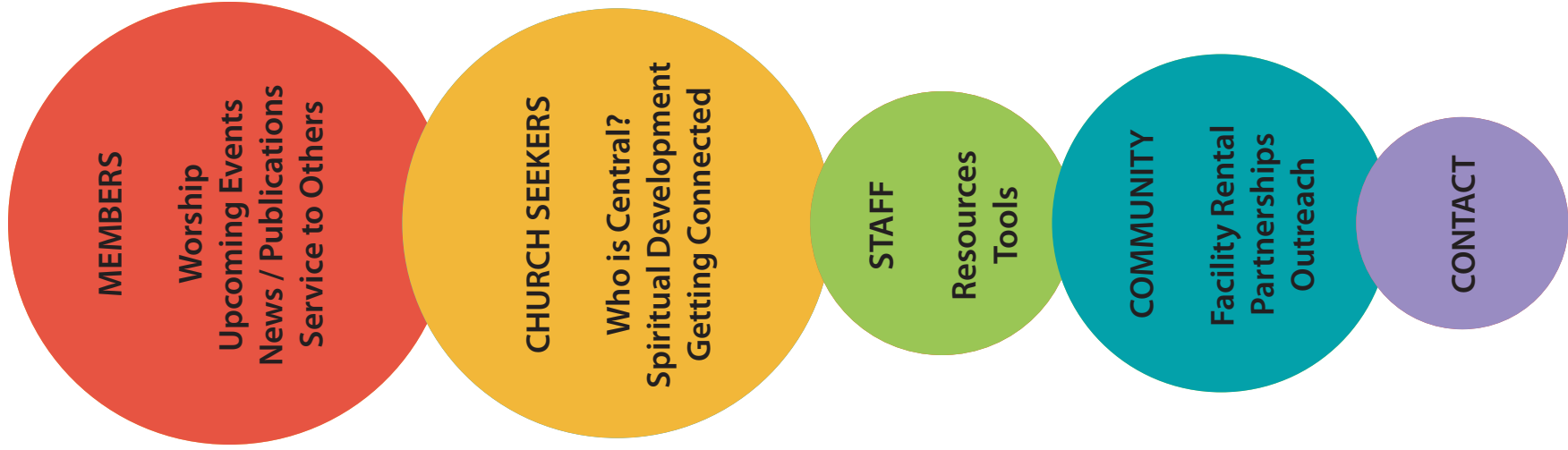
THE VOICE OF OUR COMMUNITY

"Lorem ipsum delore hit erum aut fugia et intem et quae cus idus mi, aborrum doluptaesti beriorest, sandit, es disqui nes dedit quae estur rest doluptis delitatur, sum voluptatiam, et etus amus doloritetus autem qui simusam."
~ John Doe, Client or Non-Profit Partner

Enter email to SUBSCRIBE!

CENTRAL PRESBYTERIAN CHURCH
500 CEDAR STREET | SAINT PAUL, MN 55101 | 651.555.5555

**CENTRAL PRESBYTERIAN CHURCH
AUDIENCE ASSESSMENT**



**CENTRAL PRESBYTERIAN CHURCH
SCOPE OF CONTENT
Based on Audience**

CURRENT MEMBERS

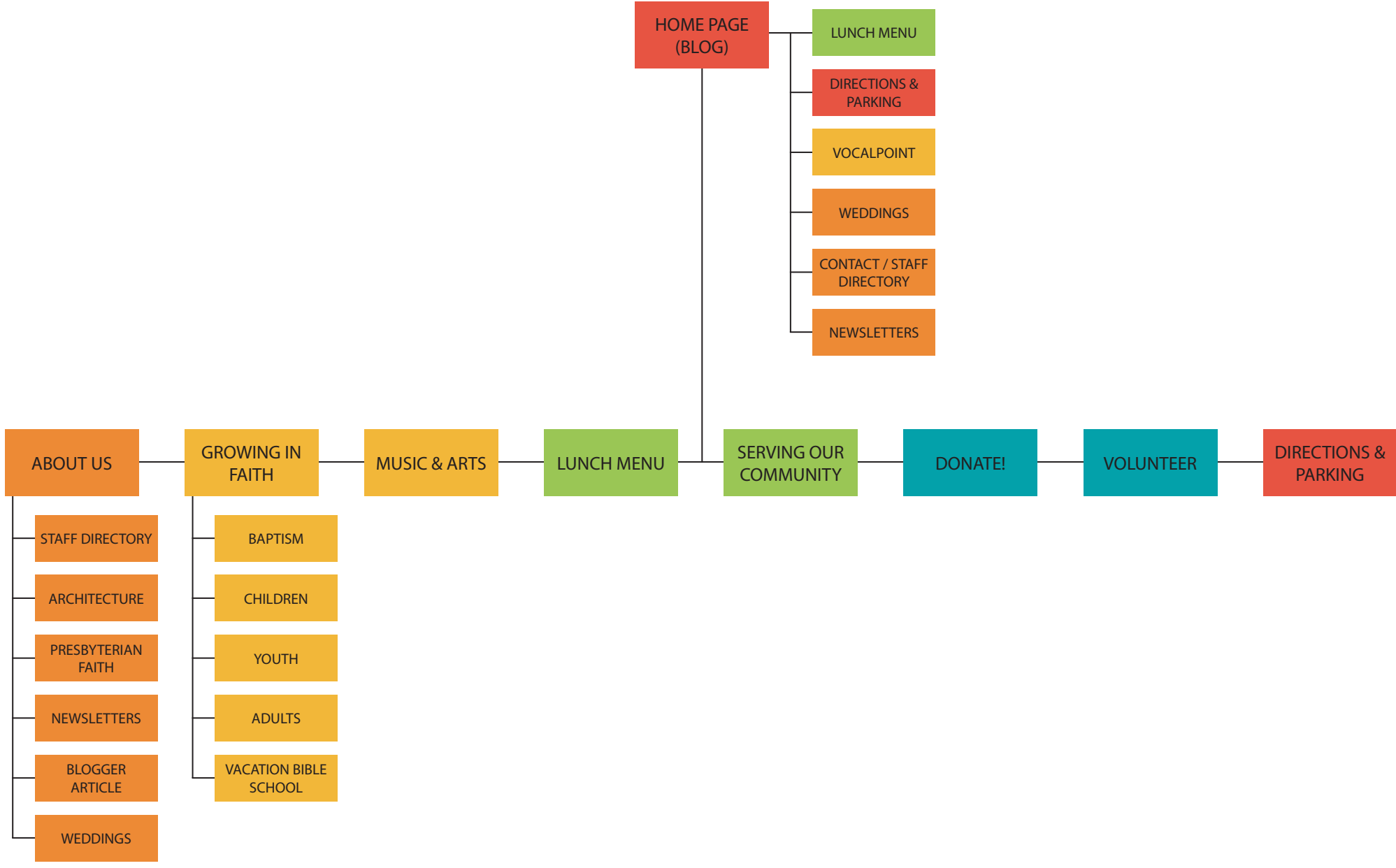
- Worship
 - Upcoming worship
 - Past sermons
- Music
 - Opportunities
 - Organ
 - Concert Schedule
 - VocalPoint
- Leadership
 - Session
 - Committees
- Getting Connected
 - Women of Central
 - Children & Youth
 - Adult Bible Study
 - Prayer Requests
- Membership Directory
- Serving Others
 - Volunteer Opportunities
 - Committee Positions
 - Donations
 - Mission Trips
 - Calendar of Events (Google)
 - Publications
 - Newsletters
 - Annual report
- STAFF**
 - Resources (Back of House Tools)
 - Media kit - logo, fonts, key artwork
 - Mailing list sign up
 - Social Media Feed for News
 - Membership Directory

CHURCH SEEKERS

- Welcome from Rev. Colby
- Our History
- What to Expect in Worship
- Foundations of Faith
- Presbyterian Affiliation
- Our Beliefs
- Baptism
- Communion
- Getting Connected
- Women of Central
- Children & Youth
- Adult Bible Study
- Prayer Requests
- Joining Central
- New Member Group

COMMUNITY

- The Facility
- Weddings
- Funerals
- Architectural History
- Facility Rental
- Partnerships
- Outreach / Missions
- Wednesday Lunches
- Martha's Closet
- Peaceful Presence
- Project Home
- The Giving Tree
- Employment
- CONTACT**
 - Mailing / Phone
 - Office Hours
 - Directions and Parking
 - Staff Directory
 - Social Media Links



**CENTRAL PRESBYTERIAN CHURCH
EXISTING STRUCTURE**